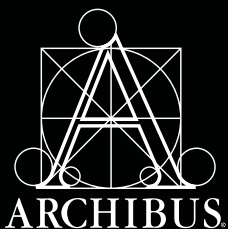


Facilities and Infrastructure Management Solutions
from **ARCHIBUS** and **ESRI** for Federal Government

**Gain
Geospatial
Intelligence
that
Transforms
Your
Mission**



Intuitive Business Transformation™ through the power of geospatial technology

Today, decision makers face an increasingly complex operating environment characterized by compressed cycle times, extended markets, aging infrastructure, and shifting demographics. Many organizations across the world recognize Geographic Information Systems (GIS) technology as an essential business intelligence tool to help address these new challenges and facilitate better decision-making. The knowledge gained from GIS allows organizations to save money, time, and resources. You can now use powerful geospatial capabilities to illuminate your existing real estate, facility, and infrastructure information through the ARCHIBUS Geospatial Extensions for ESRI, and gain an even more powerful multi-layered perspective of critical organizational initiatives.

Benefits

- Improves organizational collaboration and decision-making by providing geospatial business intelligence for sites, space, infrastructure, and physical assets
- Combines real estate, facility, and infrastructure with geospatial information to provide visual representations that improve analysis for competitive advantage
- Allows both interior and exterior data to be queried simultaneously to visualize an organization's assets and streamline enterprise workflow processes, enabling business transformation
- Leverages ESRI's pre-eminent expertise in aggregating mapping and geospatial information quickly and at low cost



Incorporate a geospatial perspective directly within your ARCHIBUS Web Central dashboards to unlock the power of geospatial visualization for improved analysis, reporting, and decision-making

Use Case Applications:

Real Estate/Portfolio Management

- Lease & property administration
- Occupancy planning / vacancy analysis
- Performance measurement, KPIs, benchmarking analysis
- Global asset management

Strategic Planning

- Facilities master planning & site infrastructure planning
- Site and proximity analysis
- Employee / customer / competitor location mapping
- Move management & analysis

Regulatory Management

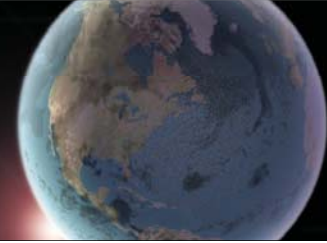
- Risk assessment & business continuity planning
- Emergency preparedness & response analysis
- Governmental regulations, such as E911, Executive Order 13327, BRAC
- Environmental compliance, EHS
- Site security

Operational Management

- Work order management
- Utilities, cable plant & network management
- Asset tracking & management
- Location & route finding

Plus Many More...

Respond to today's demands, plan for tomorrow's needs



Bringing Geography to Your Agency's Business Intelligence

Unlock the spatial component of your valuable business data and see your enterprise from a new perspective. You can now view a common operating picture of sites, space, infrastructure, and physical assets to increase organizational collaboration and make well-informed decisions concerning campus-scale space planning and real property portfolio management.

- Increase communication and collaboration through immediate access and complete integration of spatial and non-spatial data.
- Flow architectural CAD and Building Information Modeling (BIM) directly into GIS.
- Maintain a single, seamless data repository for critical information on assets and processes—both inside and outside of your buildings.
- Merge GIS and enterprise workflows to speed mission-essential processes and deliver organizational results.

Linked Visual Representations for Improved Analysis

Boost your efficiency and reduce costs with top-notch analytic tools to help answer both strategic and tactical questions. High performance organizations require a deep level of spatial knowledge to locate potential customers, assess risks, streamline procedures, and optimize operations.

- Extend the power of your ERP and Enterprise Information Modeling (EIM) with ARCHIBUS Geospatial Extensions.
- View maps, and demographics side-by-side with the financials that measure and the workflows that drive processes such as capital projects, property transactions, and lease renewals.
- Locate heat-maps of occupancy, lease expirations, total costs per square foot, costs of deferred maintenance, and other key performance indicators.

Analyze Interior and Exterior Data Simultaneously

The ARCHIBUS Geospatial Extensions let you use the powerful family of ESRI solutions to address issues that cross the artificial boundary between “inside” and “outside” the building. The extensions provide “real world” context and enable quicker decision-making based on rich, multi-dimensional sources of information.

For example,

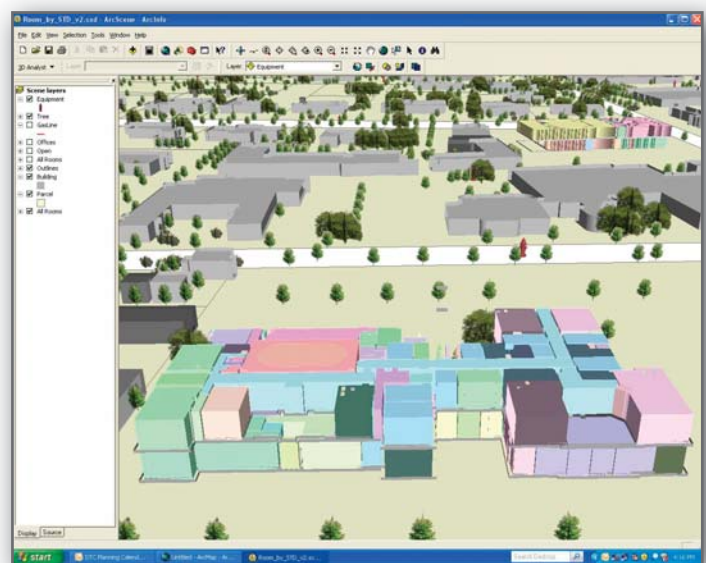
- Real Property Managers may ask: Which cities provide the optimal mix of demographic variables for opening new field offices, or laboratories?

- Space Planners may ask: How do functional departments span buildings in a campus setting?
- Operations Staff may ask: How do utility lines relate to and impact interior spaces?
- Security Personnel may ask: Which mission-critical rooms and equipment are in close proximity to our natural gas lines?

Robust GIS Functionality Made Affordable

Even if your organization or department does not have an existing GIS capability, you can instantly geo-enable your deployment by linking ESRI ArcGIS Online, directly into ARCHIBUS Web Central. You can use the off-the-shelf forms for working with properties, leases, or work requests; or you can embed your own GIS queries using just standard ARCHIBUS integration skills.

- *Outsource your GIS practice.* You can easily correlate the wealth of existing data provided by ESRI, such as street maps, satellite data, demographics, and more to your own portfolio of properties, leases, buildings, and assets.
- *Avoid redundant data entry.* You can automatically geo-reference all of your properties, buildings, leases, and assets using the information you already have in your ARCHIBUS database.
- *Keep in synch.* All GIS queries are connected to live dynamic data provided by ESRI, as you perform property transactions, sign and expire leases, reassign spaces, complete work orders and more.



Use thematic “heat” maps within an integrated, three-dimensional operational picture to visualize your vacancies, lease expirations, department occupancy, expenses, and more



ARCHIBUS, Inc.
18 Tremont Street
Boston, MA 02108 USA
Tel: 1-617-227-2508
www.archibus.com

For more information on what ARCHIBUS and ESRI can do for you, visit www.archibus.com/esrigov



ESRI
380 New York Street
Redlands, CA 92373-8100
Telephone: 909-793-2853
www.esri.com

ARCHIBUS and ESRI: A Partnership That Integrates Geospatial with Real Estate, Facilities and Infrastructure Information

ARCHIBUS is the #1 global provider of real estate, infrastructure, and facilities management solutions and services with expenditures for ARCHIBUS-related products and services exceeding 1.7 Billion (USD). More than 4,000,000 ARCHIBUS Web and Enterprise users worldwide manage over 5,000,000 properties. Available in over 130 countries and more than two dozen languages, ARCHIBUS is supported through a global network of 1,600+ ARCHIBUS Business Partners.

ESRI is the world's leading developer of geographic information system (GIS) applications for modeling and mapping geospatial data. That information supports better decision-making in planning, management, and marketing purposes for government, educational institutions, and businesses.

This remarkable partnership between these two leaders in their respective fields will enable your organization to optimize business transformation through world-class analytics derived from the use of geospatially-based real estate, facilities, and infrastructure information.

End-to-End Solution Alignment



ARCHIBUS applications offer complete end-to-end solutions with rapid integration and deployment in just 30 days

Use Cases/Examples:

ESRI and ARCHIBUS in the Federal Government

Legacy real property, infrastructure and environmental management systems of the U.S. Air Force and other branches of the military will be phased out in 2009. A major military installation in the United States is deploying a pilot integration project using commercial-off-the-shelf (COTS) solutions from ESRI and ARCHIBUS. As the military – and other government agencies – respond to best practices mandates, pilot studies like these will accelerate the move to more integrated, networked COTS solutions combining GIS and facilities information. These integrated solutions will improve information collection, analysis, visualization, and distribution with the ultimate goal of improving government effectiveness at the lowest cost to taxpayers.

