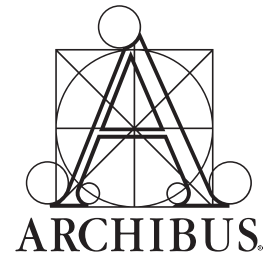


ARCHIBUS for Healthcare Organizations



- Space and Inventory Management
- Reimbursements / Indirect Cost Recovery
- TJC / EOC Compliance
- Operations & Maintenance
- Service Level Agreements
- Emergency Preparedness
- Facility Condition Assessment
- Capital Budgeting
- Project Management
- Asset Management
- Operational KPIs & Metrics
- Lease & Property Administration
- Environment + Sustainability

The #1 Solution for Real Estate, Infrastructure, and Facilities Management in the World
Over 4 million users prove it daily—saving their organizations over \$100 billion annually

ARCHIBUS

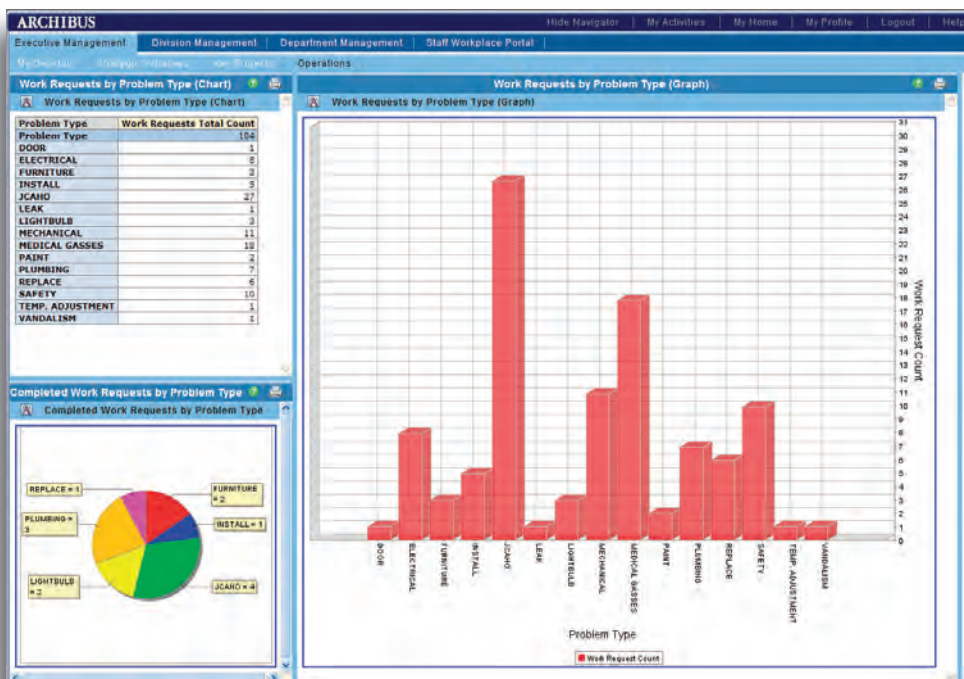
for Healthcare Organizations

Maintaining safe, functional, and compliant facilities and related infrastructure while minimizing operating costs and maximizing potential reimbursement, can be a difficult balancing act for healthcare organizations. Given this challenge, it is crucial to effectively track, analyze, and report facilities-related information to mitigate risk and reduce costs. Everyday, healthcare organizations like yours efficiently improve delivery of patient care by using the sector's leading integrated real estate, facilities, and infrastructure management solution – ARCHIBUS.

Benefits

- Provides comprehensive data collection, tracking, and reporting capabilities to comply with regulatory workplace requirements, such as TJC
- Maximizes reimbursements from third-party payers through accurate, defensible space utilization data
- Improves operational effectiveness and minimizes unnecessary expenditures by optimizing the acquisition, use, and maintenance of physical assets and infrastructure
- Increases uptime of facilities and biomedical related equipment through improved maintenance practices
- Streamlines the work order process to improve productivity and customer satisfaction

Typical Activities and Reports include:



Analyze maintenance history to identify trends and review problem areas

Operations and Maintenance

- Open Work Request Status
- Corrective Work Orders Waiting on Parts
- Service Level Agreements
- Parts Usage History & Materials to Order
- Planning Board for Labor Resources
- 12-Month PM Work Schedule
- PM Completion Rates by Trade
- Rooms with Active Work Orders
- Daily Overdue Service Requests
- Maintenance Back Log Report
- Work Orders Scheduled vs. Completed
- Environmental Health + Safety Compliance

Reimbursements

- Medicare/Medicaid Space Reimbursement
- Financial Statement for Chargeback
- Actual Costs vs. Budgets for Departments

Space Management

- Clinical Space & Rooms by Building
- Highlight Rooms by Department
- Synchronize Room Percentages
- Historical Space Usage by Department

Asset Management

- Equipment Standards and Inventory
- Depreciation Schedules
- Equipment Disposition History
- Asset Failures by Time Period

Capital Budgeting

- Approved Projects by Funding Year
- Available Capital and Expense Funds
- Budget by Program

Plus over 10,000 other activities and reports right "out-of-the-box"

Satisfy Regulatory Requirements

- Collect and report on data pertinent to life safety and environmental requirements (such as those needed for TJC, HIPAA, NFPA, EPA, and OSHA)
- Prepare for TJC audits with confidence, knowing your Preventive Maintenance and other Environment of Care data is accurate and easily accessible
- Maintain compliance history and Plan for Improvement item tracking for prior citations
- Establish continuous process improvement without relying on costly external consultants

"ARCHIBUS' space, equipment, and work management complement our organization's TJC/EOC compliance efforts. Its solid database foundation, and open architecture has helped us map, record, follow-up, and report on key elements contributing to our asset and facility compliance."

—Jeremy Schmitt
Systems Specialist
City of Hope



Maximize Reimbursement Revenues

- Submit accurate, defensible data and easily perform chargebacks to ensure maximum funds for grants and other sponsored activity
- Report space usage figures quickly to enable faster turnaround times for receiving reimbursements
- Track and allocate operational costs to departments and cost centers

"Since charging back for space approximately one year ago, more departments have evaluated how they can better utilize their existing space before requesting additional square footage. This increase in accountability has been tremendous."

—Kathy Bauer
Manager, Facilities Planning
Nebraska Medical Center



Optimize Asset Deployment

- Analyze the value and performance of your assets to better prioritize capital spending
- Improve overall space utilization via powerful reporting and chargeback functionality
- Manage the life-cycle of physical assets such as buildings, cabling, equipment, and the ongoing expense of parts and supplies

"With (ARCHIBUS) information in hand, we have been able to question design engineers who are working on a renovation project to ensure they are not specifying the purchase of new equipment that we already have in stock. This has saved us \$10,000 in the one month that we've owned the suite of products."

—Tom Kruer
Engineering Director
St. Mary's Health Care System



Improve Equipment Uptime

- Increase uptime of biomedical and facilities-related equipment by shortening response time for corrective work orders
- Minimize the risk of failure for critical equipment by detailing required preventive maintenance steps and reporting their completion
- Analyze the frequency of corrective maintenance to identify potential problems before they occur

"ARCHIBUS is a critical tool in managing bio-medical equipment life-cycles, and has met or exceeded our ROI expectations. In fact, we now recommend the system to our clients."

—Tom Pagurek
Technical Services Manager
Siemens Medical Solutions



Streamline Operations and Maintenance

- Standardize and automate the work request and work order process through easy-to-use Web forms
- Track asset condition to identify critical deficiencies and integrate with Capital Budgeting and Project Management activities
- Achieve higher customer satisfaction through reports that highlight outstanding work orders and craftsman availability
- Reduce unnecessary labor usage and costs by project, building, department, or equipment

Achieve Payback in Less Than 6 Months

- Commercial-off-the-shelf (COTS) delivery enables deployment as fast as 30 days with payback within 6 months
- Open system architecture enables easy data exchange with other ERP systems and data sources
- Scalable, modular software lets users assemble a solution that best fits their requirements and budget

"We chose ARCHIBUS in part because of its modular design, connectivity to other applications, and the fact we use much of the system right out-of-the-box with minimal customization"

—Lynda Alexander
Facilities Information Specialist
University of Texas Medical Branch



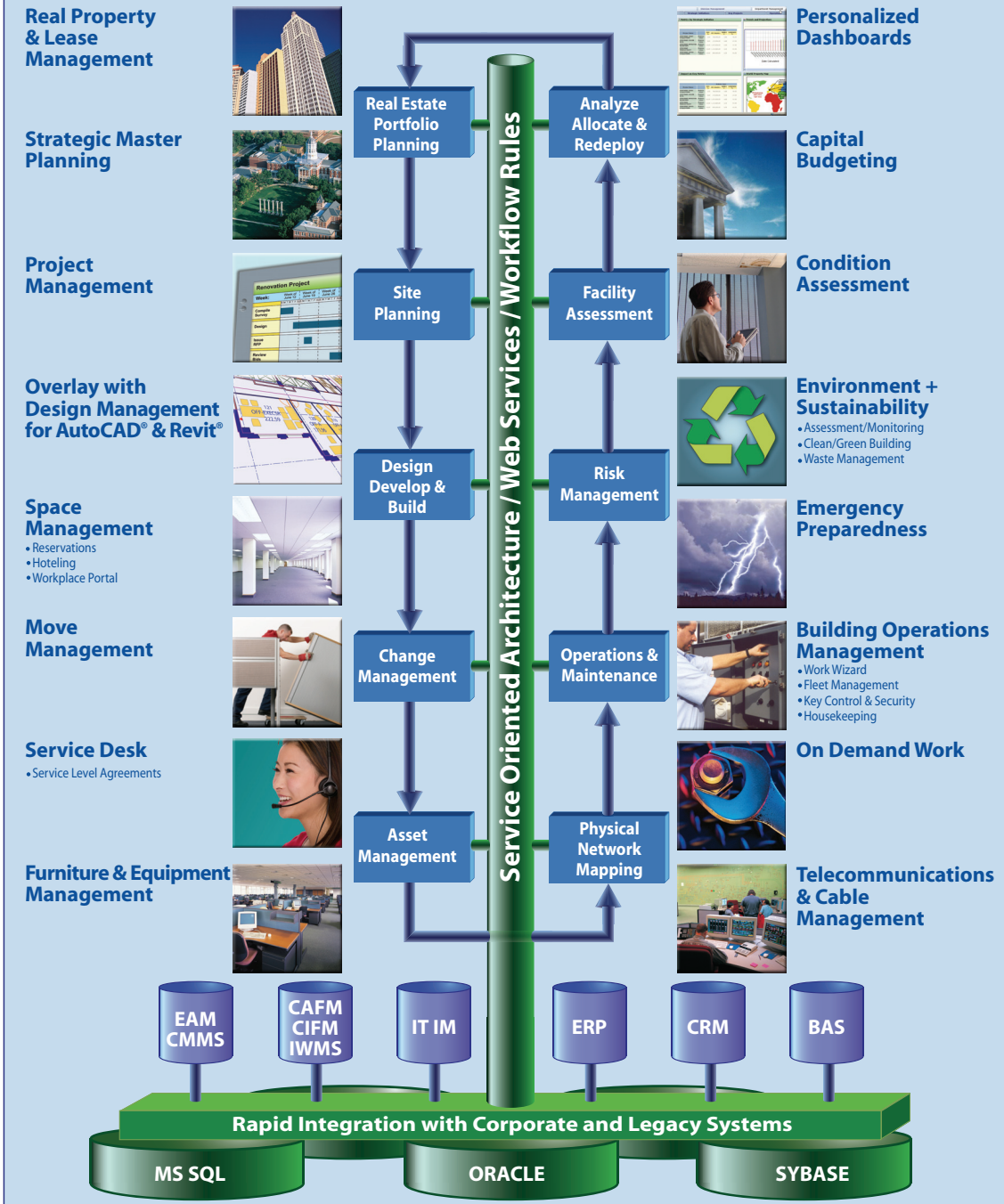
Complete and Integrated—4,000,000 Users Prove it Daily

ARCHIBUS is the #1 provider of real estate, infrastructure and facilities management solutions in the world, with expenditures for ARCHIBUS-related products and services exceeding \$1.7 billion (US). With ARCHIBUS, organizations can use a single, comprehensive, integrated solution to make informed strategic decisions that optimize return-on-investment, lower asset lifecycle costs, and increase enterprise-wide productivity—reducing their infrastructure and facilities related costs by as much as 34%.

Today, more than 4,000,000 ARCHIBUS users around the globe collectively save over \$100 billion each year for their organizations. Available in over 130 countries and more than two dozen languages, ARCHIBUS is supported through a global network of over 1,600 professionals.



ARCHIBUS applications offer complete end-to-end solutions with rapid integration and deployment in just 30 days



Some of the healthcare organizations that benefit from ARCHIBUS:

- Alegent Health Systems
 - Atlantic Health Systems
 - Bermuda Hospitals Board
 - Capital District Health Authority (CA)
 - Calgary Health Region (CA)
 - Cedars-Sinai Medical Center
 - Children's Hospital of Boston
 - Children's Hospital of Philadelphia
 - Clarian Health
 - Duke University Medical Center
 - Fraser Health Authority (CA)
 - Geisinger Health System
 - Great Ormond Street Hospital for Children NHS Trust (UK)
 - Johns Hopkins Hospital
 - Kaiser Permanente
 - London Health Sciences Centre (CA)
 - Massachusetts General Hospital
 - MD Anderson Cancer Center
 - Memorial Sloan-Kettering Cancer Center
 - Mount Sinai School of Medicine
 - New York University School of Medicine
 - Norfolk and Waveney Mental Health Foundations Trust (UK)
 - Ontario Ministry of Health (CA)
 - Partners HealthCare
 - Poudre Valley Hospital
 - Serco Health Services (UK)
 - Singapore General Hospital
 - Staten Island University Hospital
 - St. John's Hospital
 - University of Medicine & Dentistry of NJ
 - Vancouver Coastal Health (CA)
 - Wake Forest University Baptist Medical Center
 - West Hertfordshire Hospitals NHS Trust (UK)
- and many more...**

For more information about how your healthcare organization can benefit from implementing ARCHIBUS visit, www.archibus.com/health8

ARCHIBUS, Inc. 18 Tremont Street Boston, MA 02108 USA Telephone: 1-617-227-2508 www.archibus.com

©2010, ARCHIBUS, Inc. All rights reserved. ARCHIBUS, the ARCHIBUS logo, TIFM™ and Intuitive Business Transformation™ are trademarks of Facilities Management Techniques, Inc. All other products or name brands are trademarks of their respective holders.

